

Spectrum Smartcheck AI

Rapid Screening System

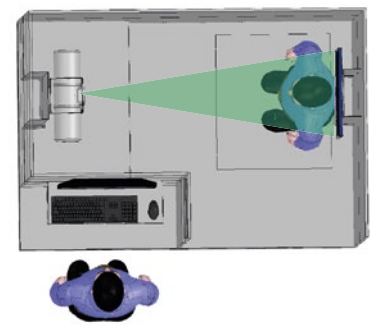
Assisting in
Combating COVID-19



The Spectrum **Smartcheck AI** Rapid Screening System was developed to perform chest X-ray examinations en masse in order to identify traces of pulmonary infections characteristic of COVID-19 contamination.



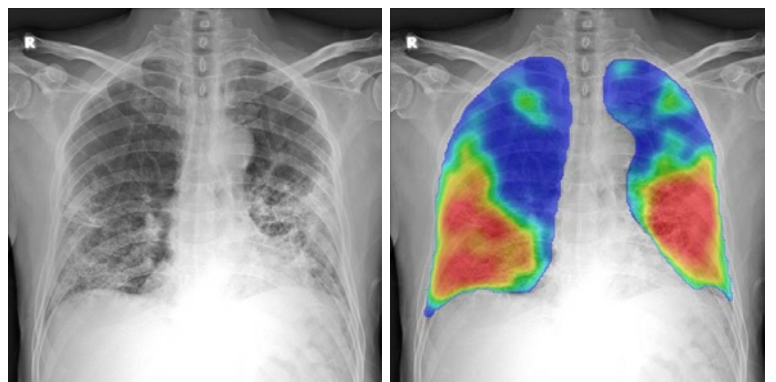
The **Spectrum Smartcheck AI** rapid screening system allows easy installation in public and private places and has low operating costs, in addition to having a fast and efficient disinfection system.



Operational efficiency performing **up to 400 exams per day**

Easy diagnosis

The Aquilla Smartcheck AI device has a high-resolution **digital detector** and **with its AI (Artificial Intelligence) functionality** will generate a score between 0 and 100 indicating the extent of abnormalities related to COVID-19, displaying these pulmonary abnormalities through a heat map and quantifying the percentage of affected lung.





- Reduction of overload in hospitals and health units in search of diagnoses;
- Assistance in the rapid screening of people who may be infected / contaminated;
- Relevant contribution to the non-proliferation of the virus;
- Protection of professionals involved in the diagnosis of COVID-19



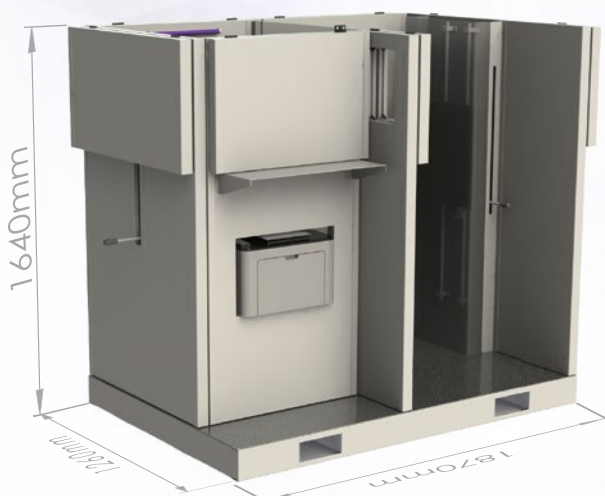
Ease of installation

All the more complex parts that make up the **Spectrum Smartcheck AIs** equipment are shipped from the factory assembled, reducing the need for a specialized technician to assemble the equipment in the field.

Requires reduced space for installation (1,9x1,3m/ 6.3x4,3ft) and can be installed in places with easy access to the target audience.

Ease of transport

The cabin has an entrance that allows handling by forklift. The walls and structure of the equipment are foldable, allowing height reduction to facilitate transport to places of interest to public safety managers.



Easy disinfection

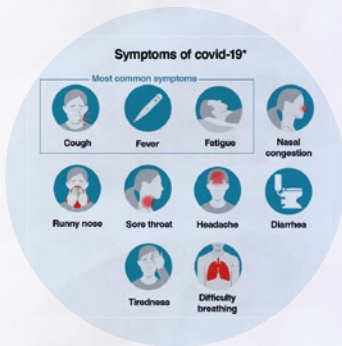
The equipment has a polycarbonate panel in front of the detector and the X-ray tube allowing easy decontamination of the equipment between exams. It allows the use of sprayers inside the cabin without risk of damaging the equipment components.

Operation safety

The radiology technician does not need to enter the interior of the armored cabin (radioprotection safety) to position the equipment and / or patient, the entire positioning process is carried out by the commands in the external area, reducing the risk of contamination by the operating technician.



HOW IT WORKS



1• Citizen realizes contamination symptoms;



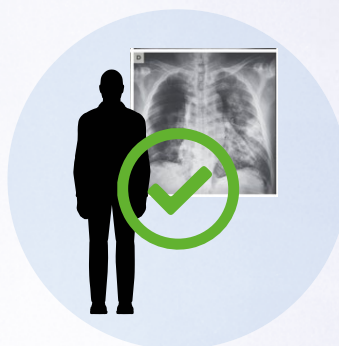
2• Citizen registers via cell phone or through a self-service totem;



3• Citizen goes to the nearest Spectrum Smartcheck AI sorting system at a predetermined time;



4• After presenting a document and password (QR CODE and etc.), the citizen performs the screening exam;



5• Results are released within 20 seconds with an indication of what next steps should be taken, return home or go to the health unit;



6• All information is sent to the health authority in real time with statistical data of the citizens (gender, address, etc.).



FLEXIBILITY IN OPERATION

Squares or parks



Watercraft



Trucks



Containers



VMI Security

Av. Hum, 55 - Distr. Ind. Genesco Aparecido de Oliveira
Lagoa Santa / MG - Brazil - Zip code 33400-000
Telephone: +55 (31) 3622-0470

X-RAY SCANNERS

www.vmisecurity.com
contact@vmisecurity.com